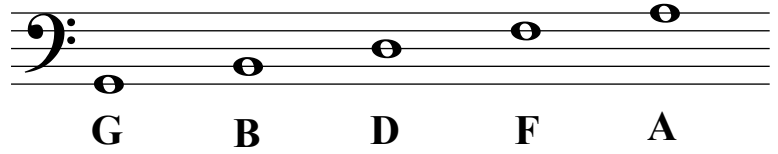


# Note Recognition Practice Sheet

## 2 - Bass Clef

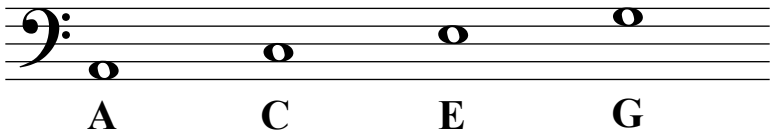
- 1) write note letter names under notehead
- 2) find notes on the piano, even using just one finger

notes on the lines

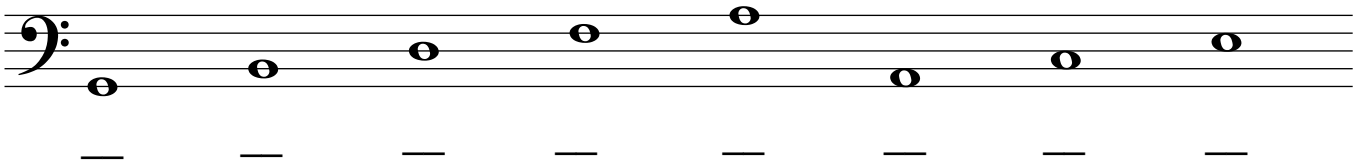


A bass clef staff with five notes on the lines. The notes are G (first line), B (second line), D (third line), F (fourth line), and A (fifth line). The letter names G, B, D, F, and A are written below each note.

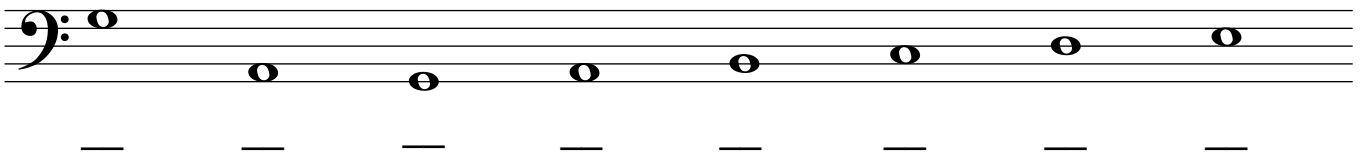
notes in the spaces



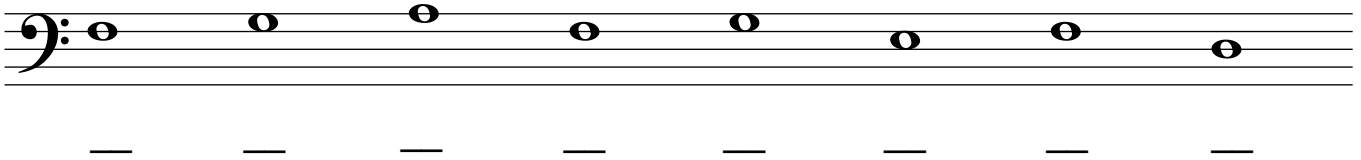
A bass clef staff with four notes in the spaces. The notes are A (first space), C (second space), E (third space), and G (fourth space). The letter names A, C, E, and G are written below each note.



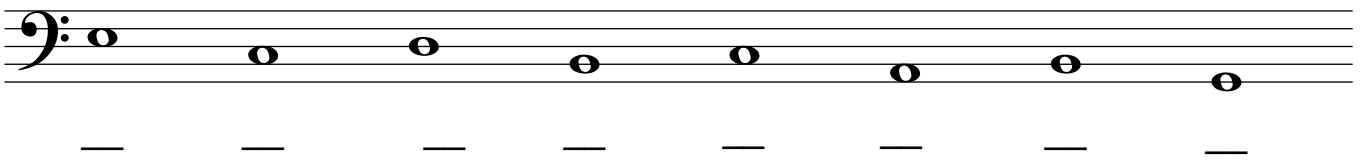
A bass clef staff with five notes on the lines (G, B, D, F, A) and four notes in the spaces (A, C, E, G). Below the staff are eight horizontal lines for writing.



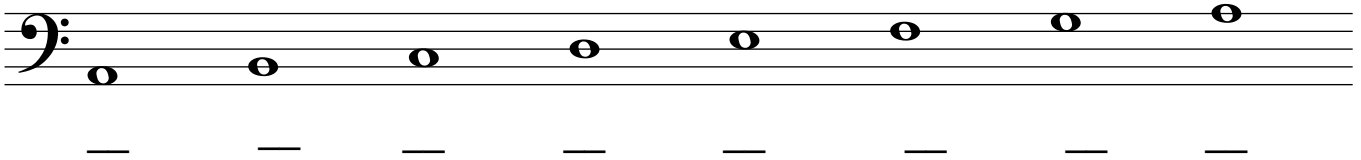
A bass clef staff with five notes on the lines (G, B, D, F, A) and four notes in the spaces (A, C, E, G). Below the staff are eight horizontal lines for writing.



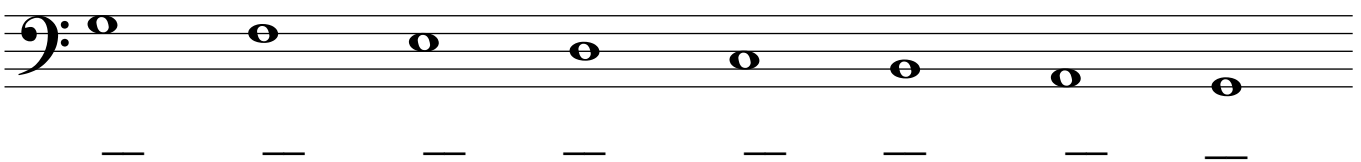
A bass clef staff with five notes on the lines (G, B, D, F, A) and four notes in the spaces (A, C, E, G). Below the staff are eight horizontal lines for writing.



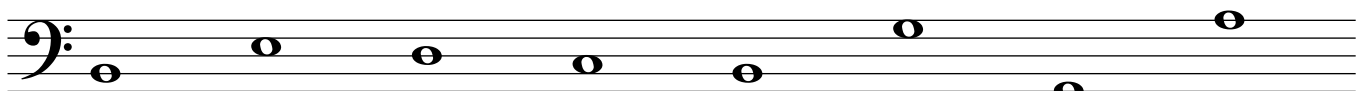
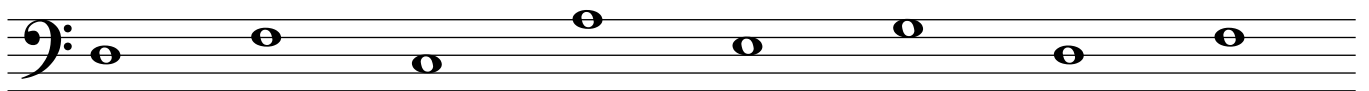
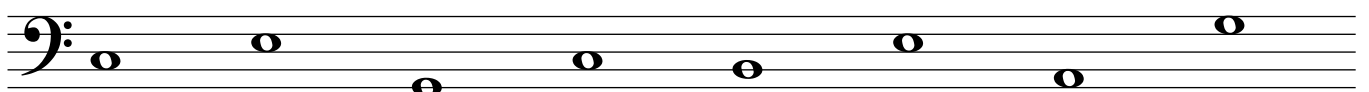
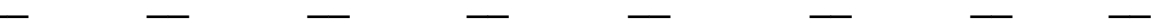
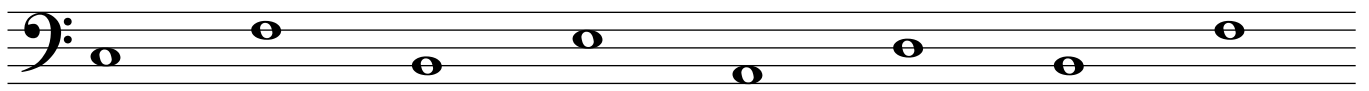
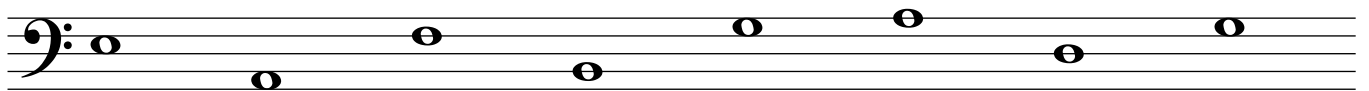
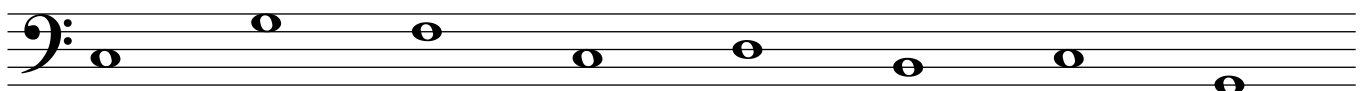
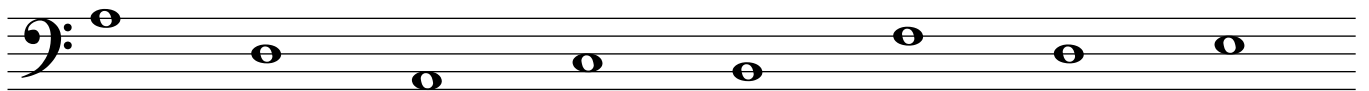
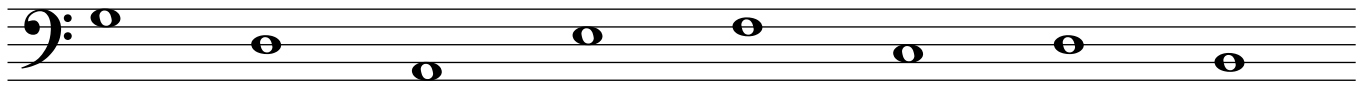
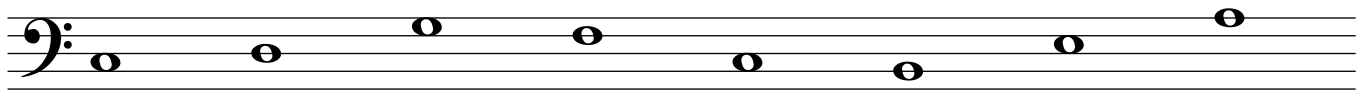
A bass clef staff with five notes on the lines (G, B, D, F, A) and four notes in the spaces (A, C, E, G). Below the staff are eight horizontal lines for writing.

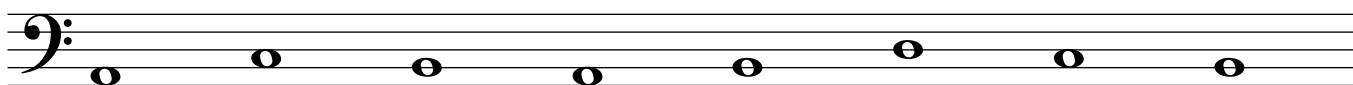
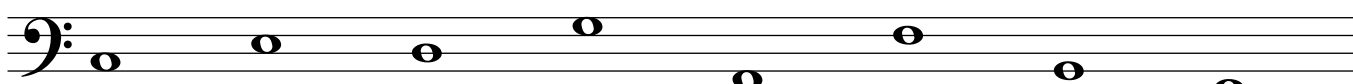
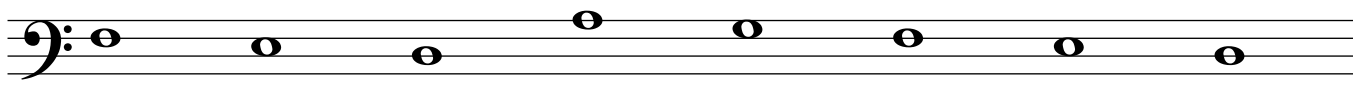
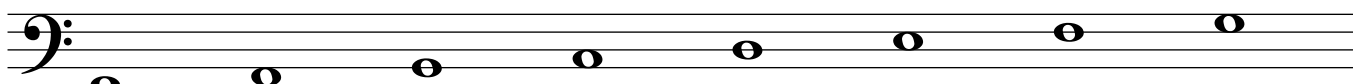
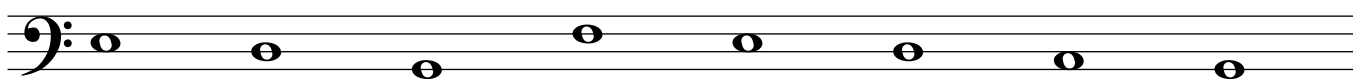
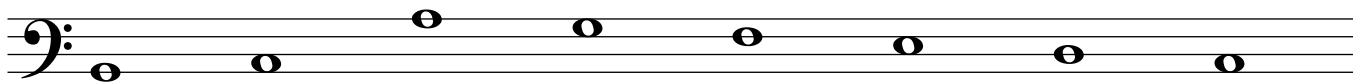
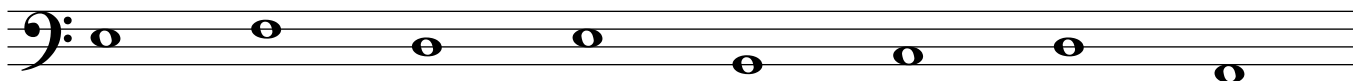
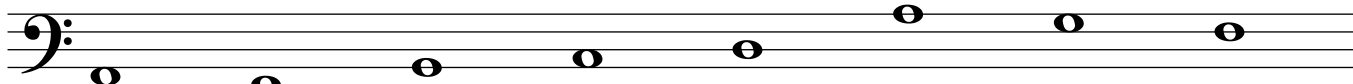
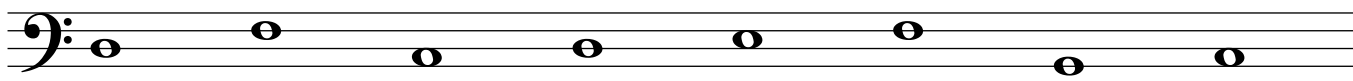


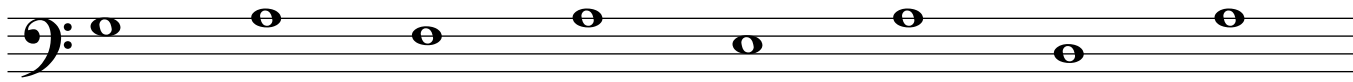
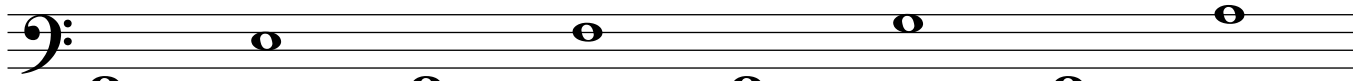
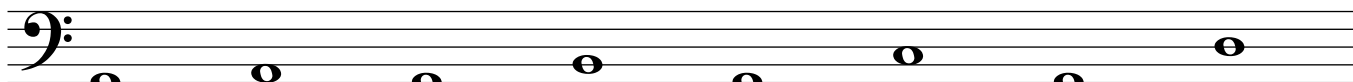
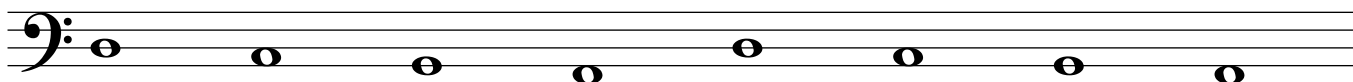
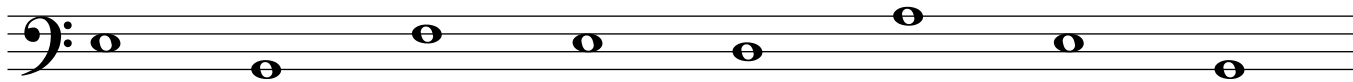
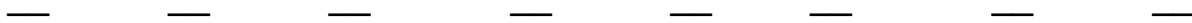
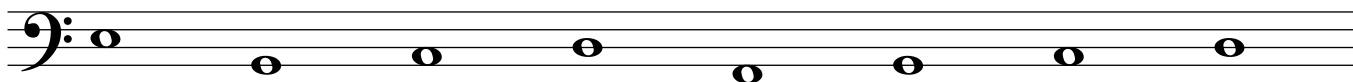
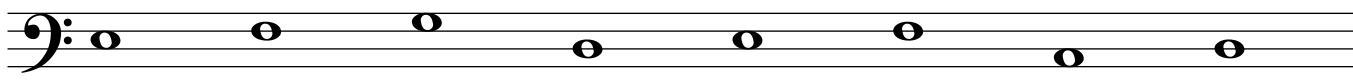
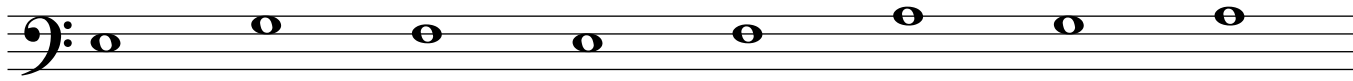
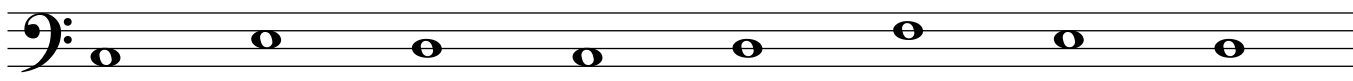
A bass clef staff with five notes on the lines (G, B, D, F, A) and four notes in the spaces (A, C, E, G). Below the staff are eight horizontal lines for writing.

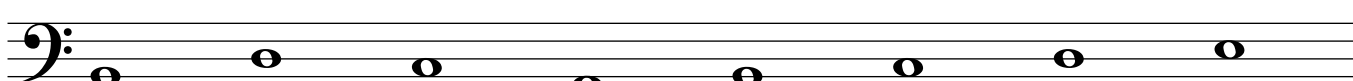
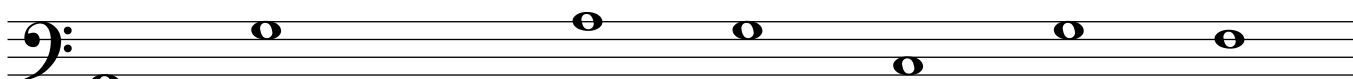
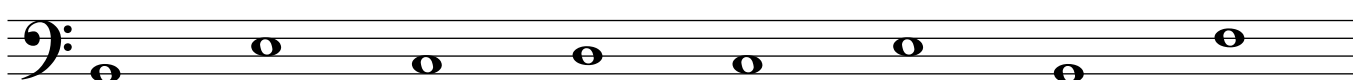
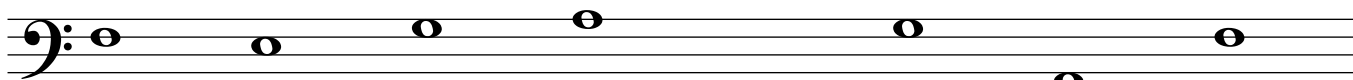
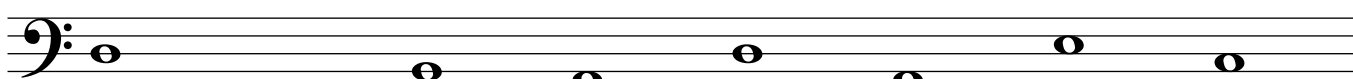
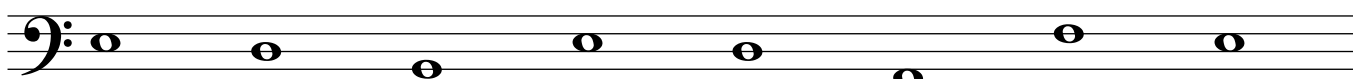
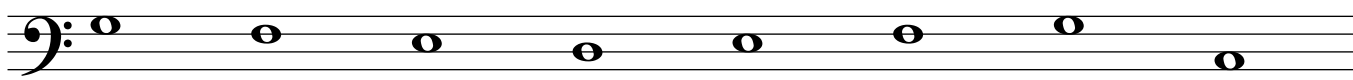
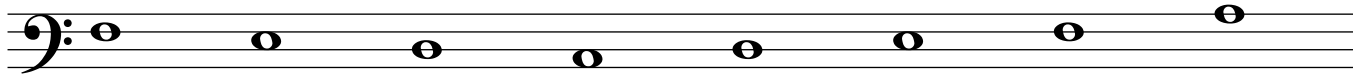
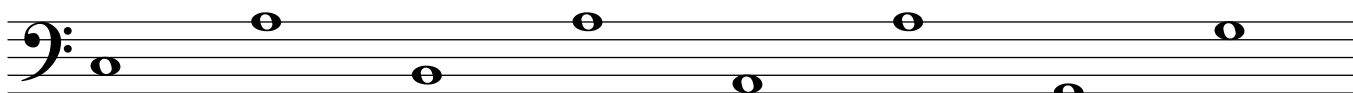


A bass clef staff with five notes on the lines (G, B, D, F, A) and four notes in the spaces (A, C, E, G). Below the staff are eight horizontal lines for writing.









A musical staff with a bass clef. It contains eight quarter notes: G2, A2, B2, C3, D3, E3, F3, and G3.

— — — — — — — —

A musical staff with a bass clef. It contains eight quarter notes: A2, B2, C3, D3, E3, F3, G3, and A3.

— — — — — — — —

A musical staff with a bass clef. It contains eight quarter notes: B2, C3, D3, E3, F3, G3, A3, and B3.

— — — — — — — —

A musical staff with a bass clef. It contains eight quarter notes: C3, D3, E3, F3, G3, A3, B3, and C4.

— — — — — — — —

A musical staff with a bass clef. It contains eight quarter notes: D3, E3, F3, G3, A3, B3, C4, and D4.

— — — — — — — —

A musical staff with a bass clef. It contains eight quarter notes: E3, F3, G3, A3, B3, C4, D4, and E4.

— — — — — — — —

A musical staff with a bass clef. It contains eight quarter notes: F3, G3, A3, B3, C4, D4, E4, and F4.

— — — — — — — —

A musical staff with a bass clef. It contains eight quarter notes: G3, A3, B3, C4, D4, E4, F4, and G4.

— — — — — — — —

A musical staff with a bass clef. It contains eight quarter notes: A3, B3, C4, D4, E4, F4, G4, and A4.

— — — — — — — —