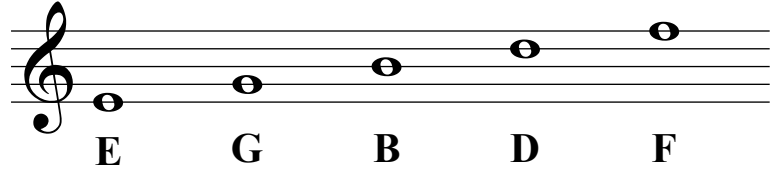


Note Recognition Practice Sheet

1 - Treble Clef

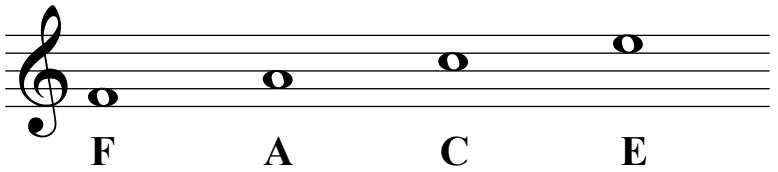
- 1) write note letter names under notehead
- 2) find notes on the piano, even using just one finger

notes on the lines

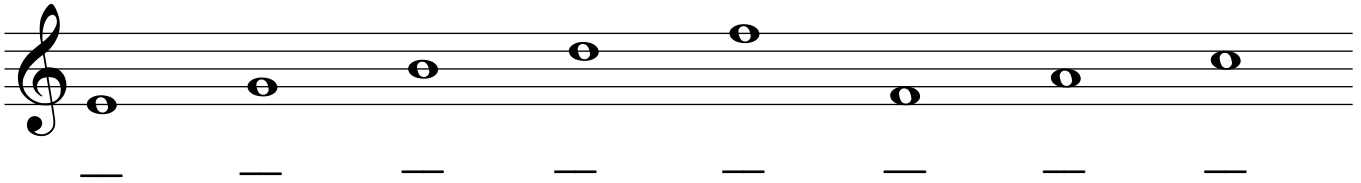


A musical staff in treble clef with five whole notes on the lines. The notes are E (first line), G (second line), B (third line), D (fourth line), and F (fifth line). The letters E, G, B, D, and F are printed below each note.

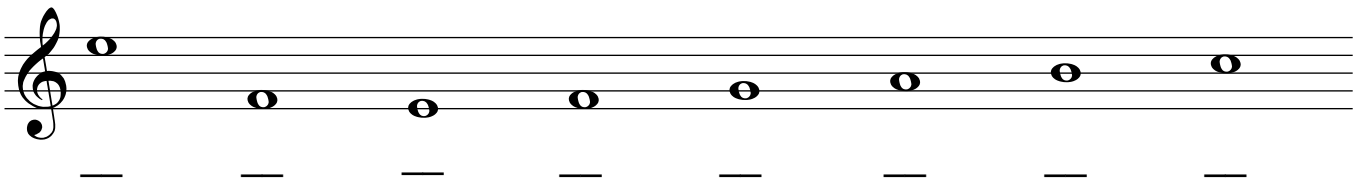
notes in the spaces



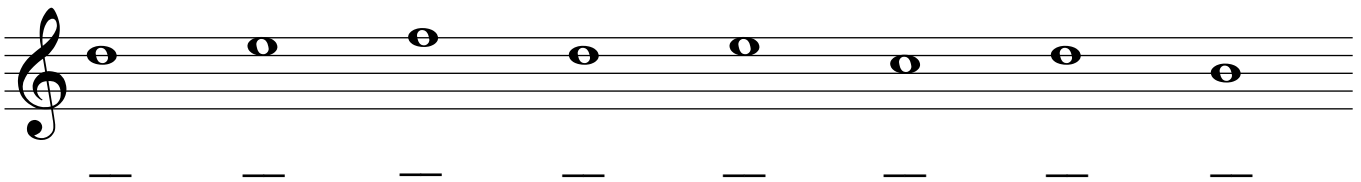
A musical staff in treble clef with four whole notes in the spaces. The notes are F (first space), A (second space), C (third space), and E (fourth space). The letters F, A, C, and E are printed below each note.



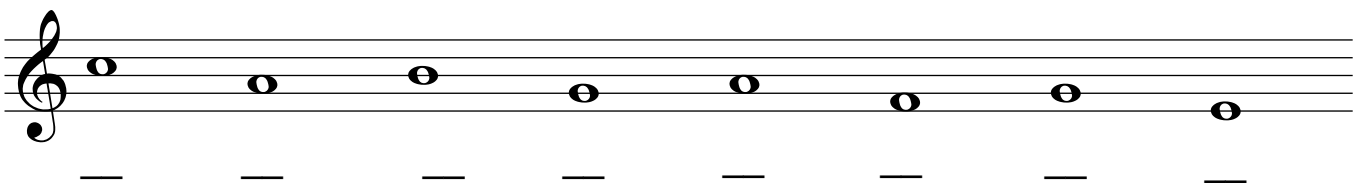
A musical staff in treble clef with eight whole notes. The first four notes are on the lines (E, G, B, D) and the last four are in the spaces (F, A, C, E). Below the staff are eight horizontal lines for writing the note names.



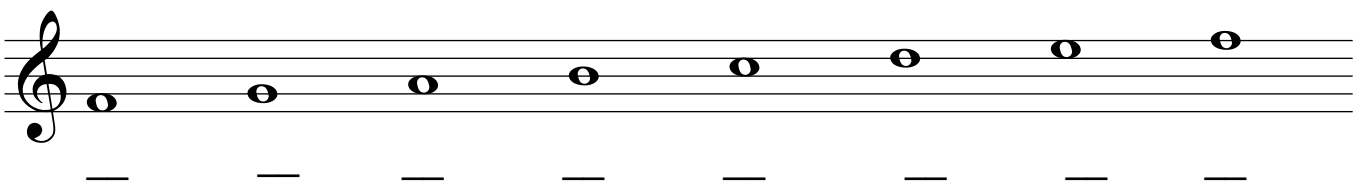
A musical staff in treble clef with eight whole notes. The first four notes are on the lines (E, G, B, D) and the last four are in the spaces (F, A, C, E). Below the staff are eight horizontal lines for writing the note names.



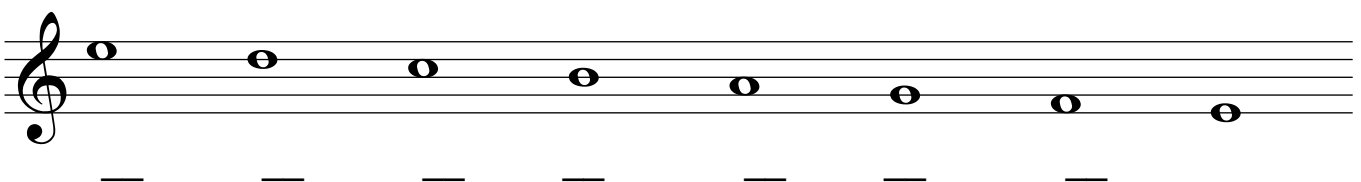
A musical staff in treble clef with eight whole notes. The first four notes are on the lines (E, G, B, D) and the last four are in the spaces (F, A, C, E). Below the staff are eight horizontal lines for writing the note names.



A musical staff in treble clef with eight whole notes. The first four notes are on the lines (E, G, B, D) and the last four are in the spaces (F, A, C, E). Below the staff are eight horizontal lines for writing the note names.



A musical staff in treble clef with eight whole notes. The first four notes are on the lines (E, G, B, D) and the last four are in the spaces (F, A, C, E). Below the staff are eight horizontal lines for writing the note names.



A musical staff in treble clef with eight whole notes. The first four notes are on the lines (E, G, B, D) and the last four are in the spaces (F, A, C, E). Below the staff are eight horizontal lines for writing the note names.

— — — — — — — —

— — — — — — — —

— — — — — — — —

— — — — — — — —

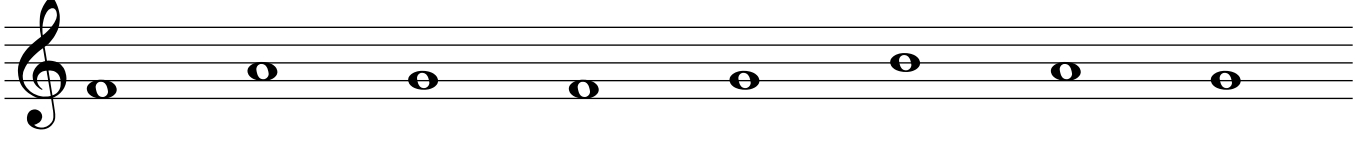
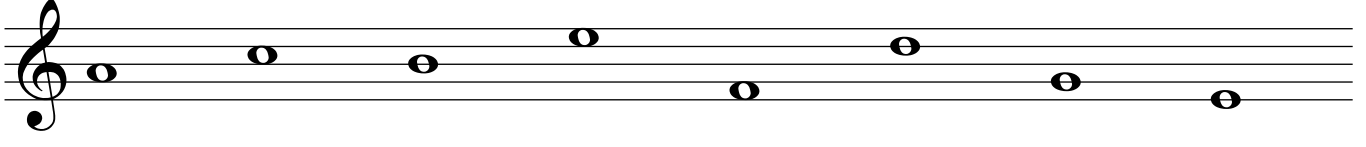
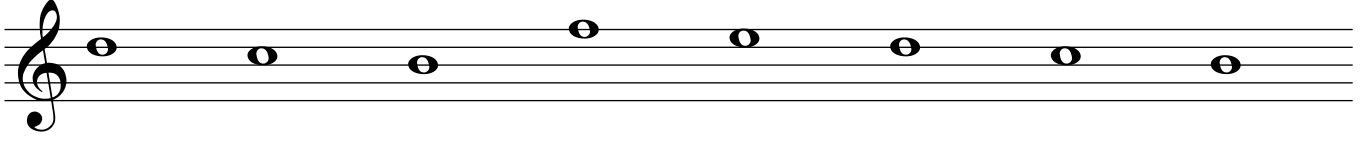
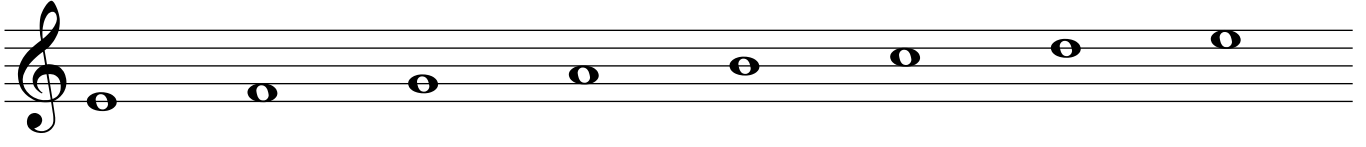
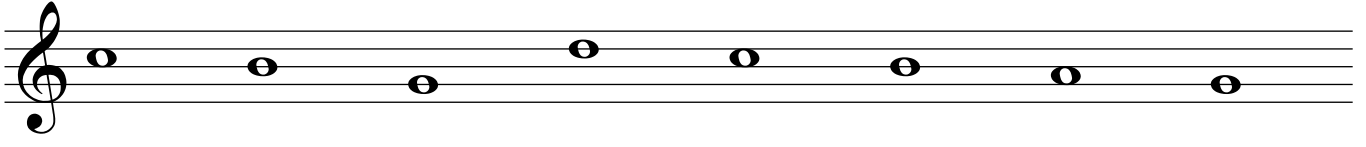
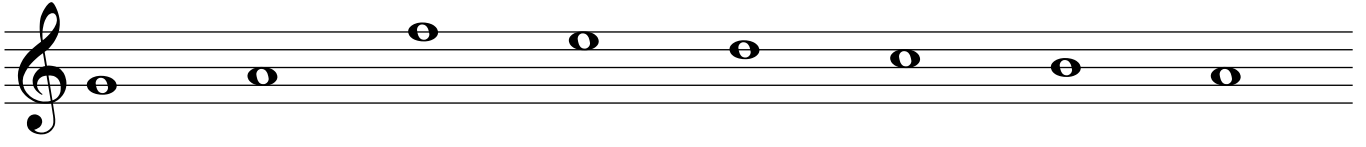
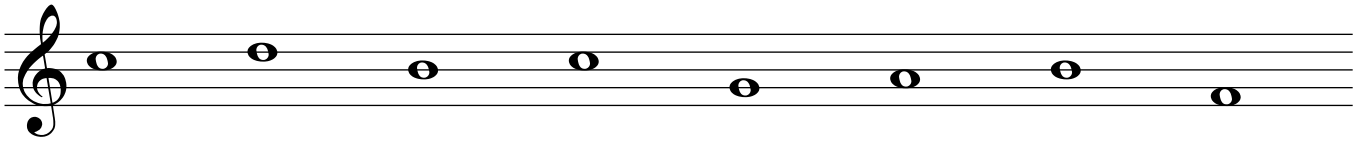
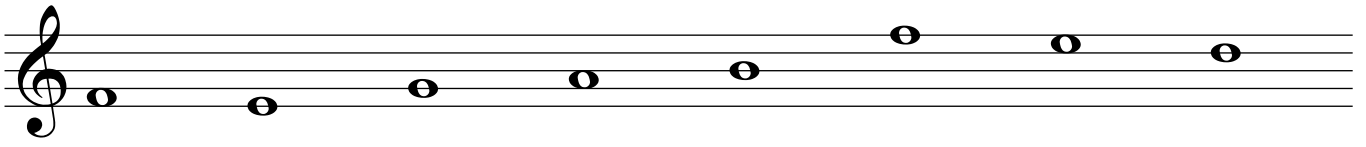
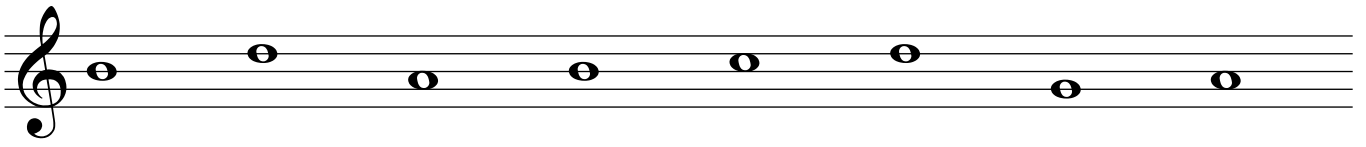
— — — — — — — —

— — — — — — — —

— — — — — — — —

— — — — — — — —

— — — — — — — —



— — — — — — — —

— — — — — — — —

— — — — — — — —

— — — — — — — —

— — — — — — — —

— — — — — — — —

— — — — — — — —

— — — — — — — —

— — — — — — — —

— — — — — — — —

— — — — — — — —

— — — — — — — —

— — — — — — — —

— — — — — — — —

— — — — — — — —

— — — — — — — —

— — — — — — — —

— — — — — — — —

— — — — — — — —

